

Musik :

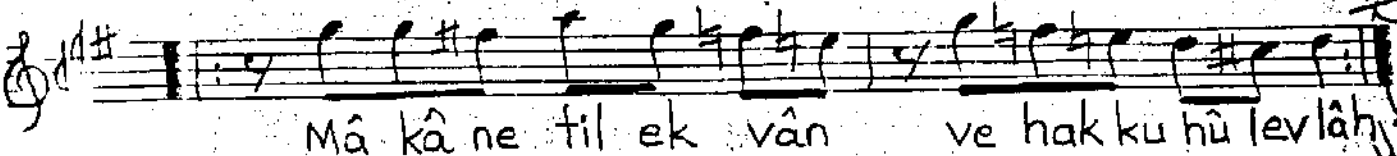
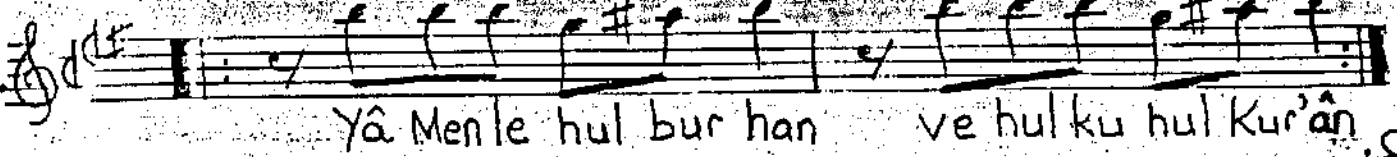
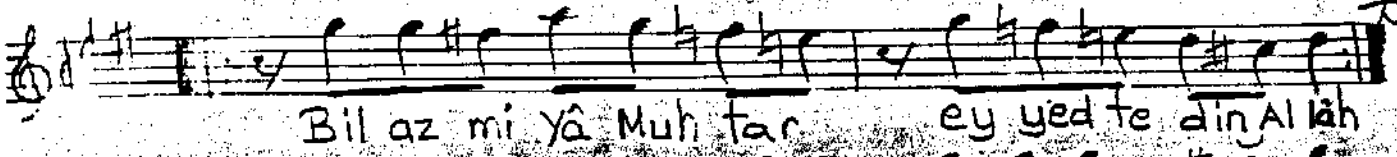
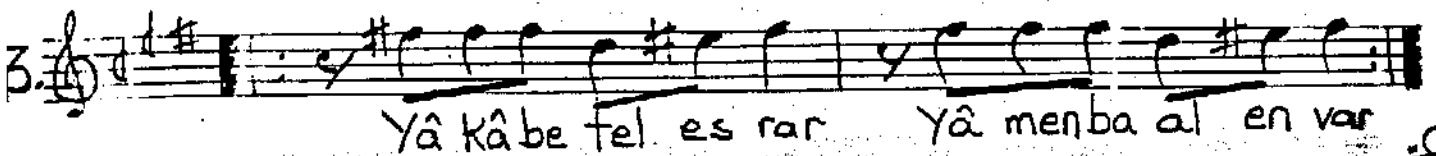
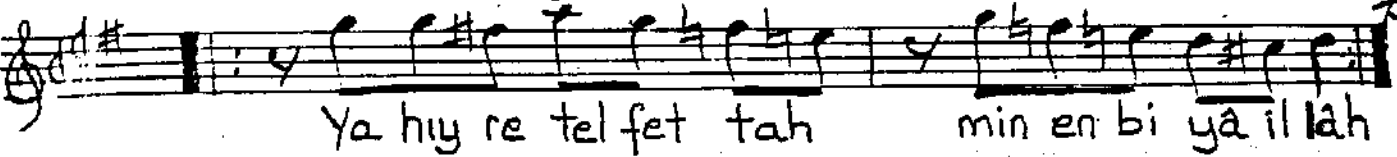
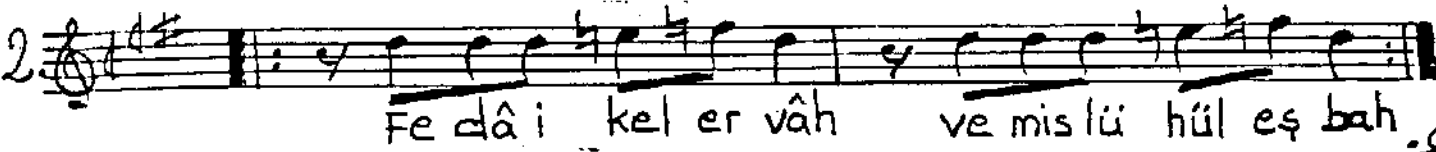
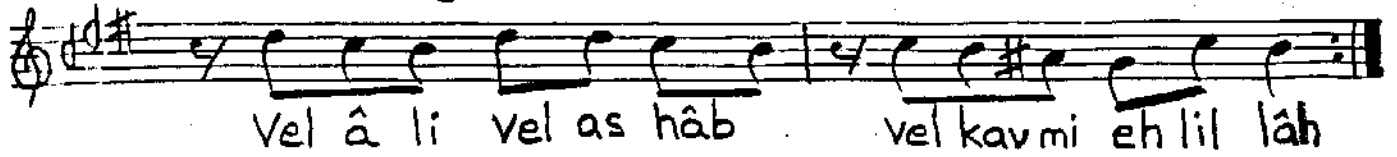
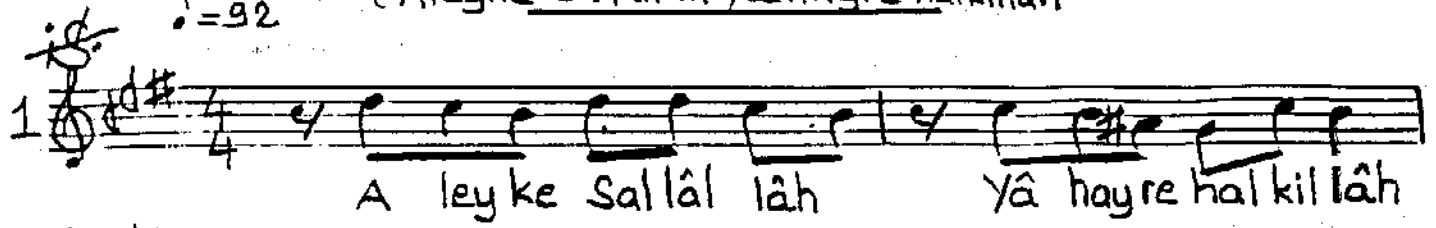
Usul : Sofyan

! = 92

SEGÂH ŞUGUL Beste : Ahmet Hatipoğlu

(Na't-ı Nebvî) Güfte : Ken'ân Rifâî

(Aleyke sallâlah yâ hayre halkillâh



-1- Aleyke sallâlah "Sana salâte edera Allah" Fedâ-i kel-ervah "Sana kurban ruhlar
Yâ hayre halkillâh Ey halkın ey hayretin Ve mislûhül eşbah ve kerâ bedentler
Vel-âli vel-ashâb ve Âline ve ashâbına Yâ hiyretel-fettah Ey Fettah'ın secdâsı
Vel-kavmi ehilillah ve ehilullah olanlara Min enbiyâillah Allahın nebîleri anından

-3- Yâ kâbetel esrar "Ey sırların kâbesi" Yâ menlehul-burhan "Ey burhanın şâhidi
Yâ menbaa' envar Ey nurların kaynağı Ve hulkuhul-kurân ve ahlâkı Kur'ân olan
Bil'azmi yâ Muhtar Ey secdin peygamber Mâkân etil ekvan "İlmazlı kâinat
Ey yed te dîn Allah Azîze Allahın dînası ve hakkıhul levlah "Sen olmasaydın eger"
Segâh şugul

Güftenin tanınması : İlahiyat Ken'ân Şâh 190